

Plexidor® XL Springs Replacement Instructions

For doors manufactured before 2007:

Suggested Tools Needed: 6 inch needle nose vise-grip
 5/16 inch nut driver
 1/8 inch Allen wrench

1. Remove interior frame from house door or wall by unscrewing the four retaining screws and sliding the pet door out of the mounting hole.

2. Remove the Spring Hoods by unscrewing hex-head screw and lifting over rivet heads.

3. Remove the pivot screw that holds the bent arm in position using a 5/16 inch nut driver and remove the old bent arm and spring.

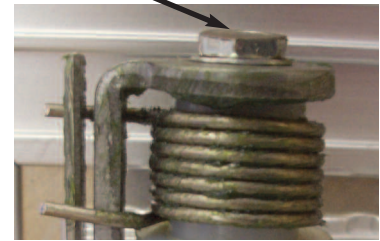
4. Put nylon tube spacer over the pivot pin.

5. Put spring over the nylon tube spacer.

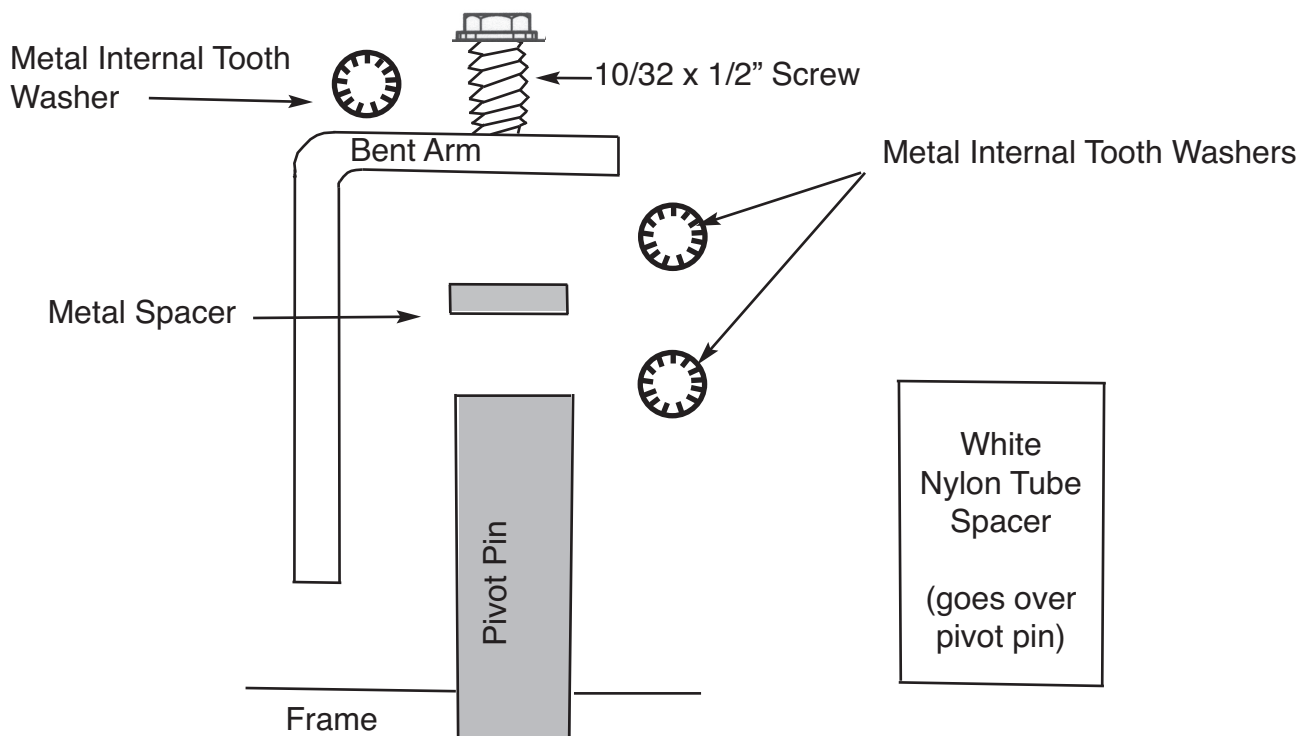
6. Put metal internal tooth washer on top of spring.



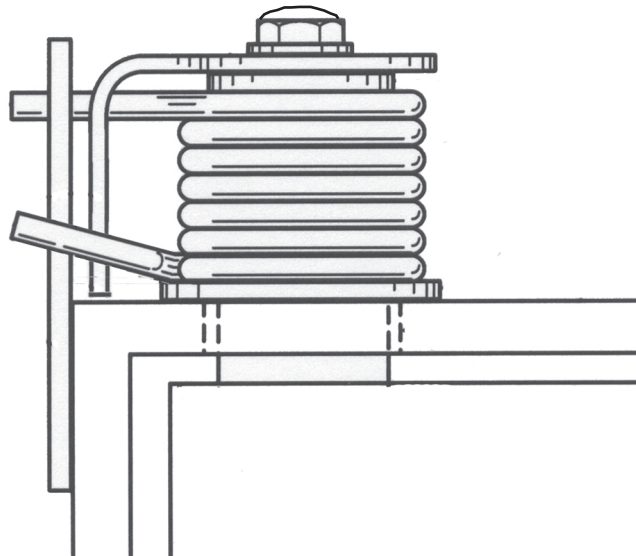
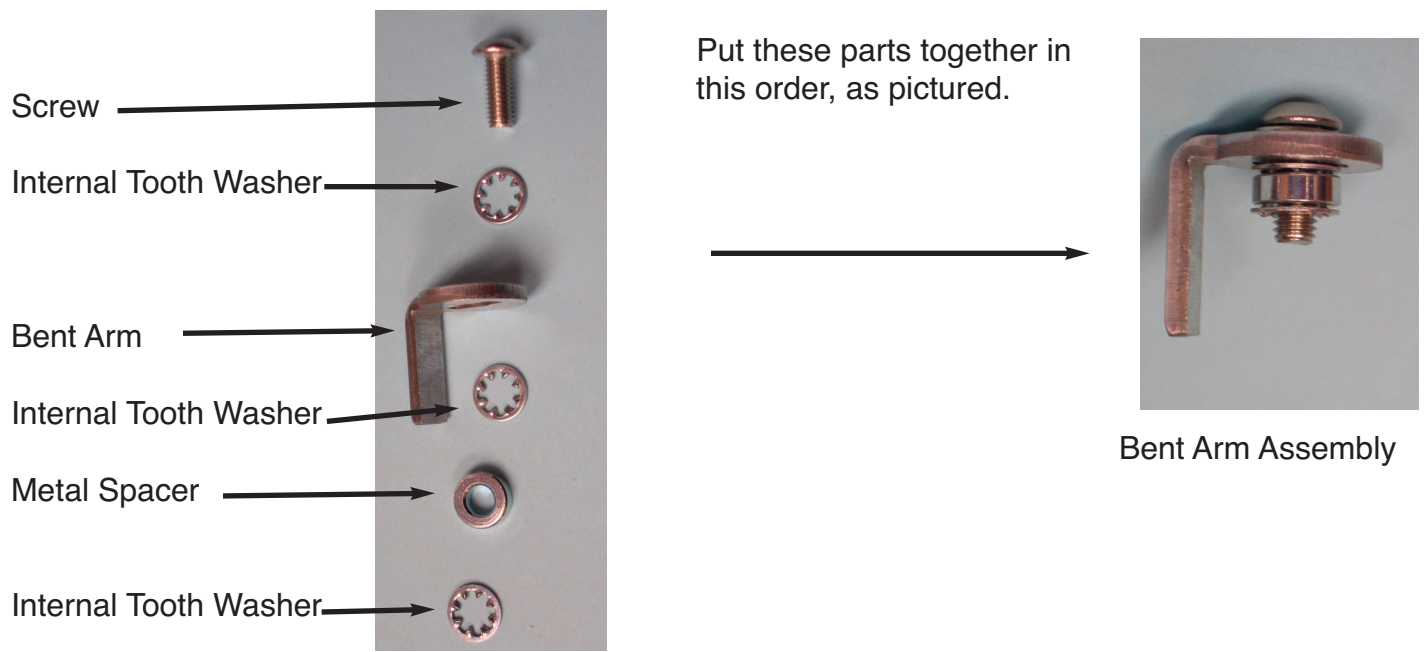
Pivot Screw



(pictured spring has grease on it)



7. Put the new bent arm assembly parts together as pictured here:



9. Put the new bent arm assembly on top of the spring and tighten it down with a 1/8 inch Allen wrench. Do not over tighten. Just make it snug. Make sure the panel is held centered while you tighten the assembly together; if you don't, the door panels will not center properly.

10. Replace the Spring Hood and screw it in place. Again, do not over tighten or you may strip the screw.

11. Reinstall pet door in the mounting hole and use as normal.

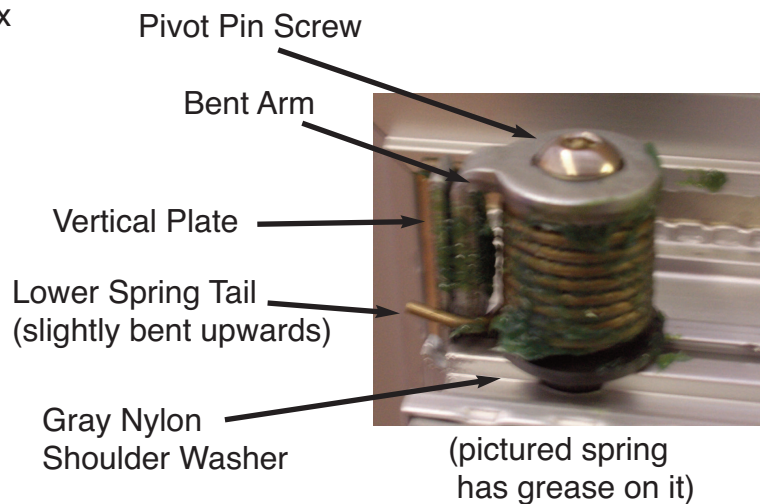
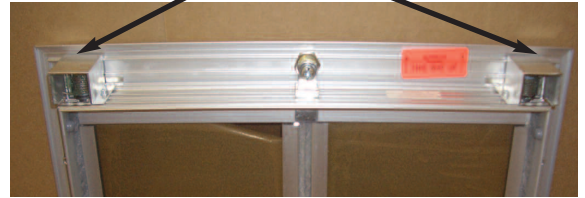
Plexidor® XL Spring Replacement Instructions (cont'd)

For doors manufactured after 2007:

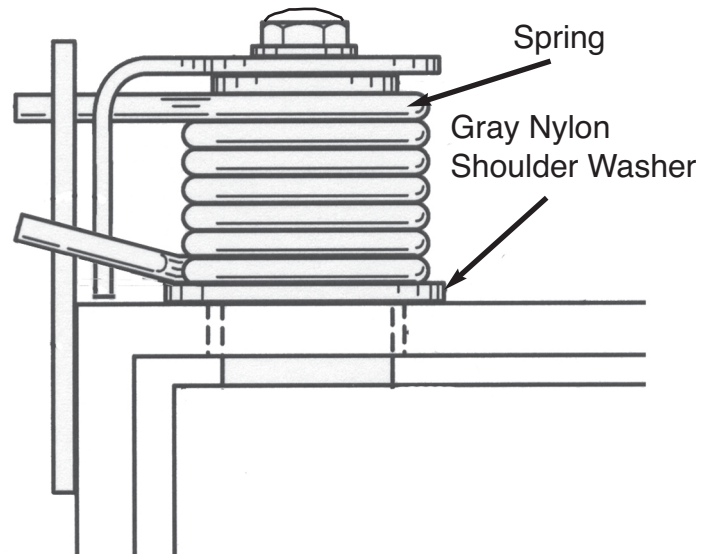
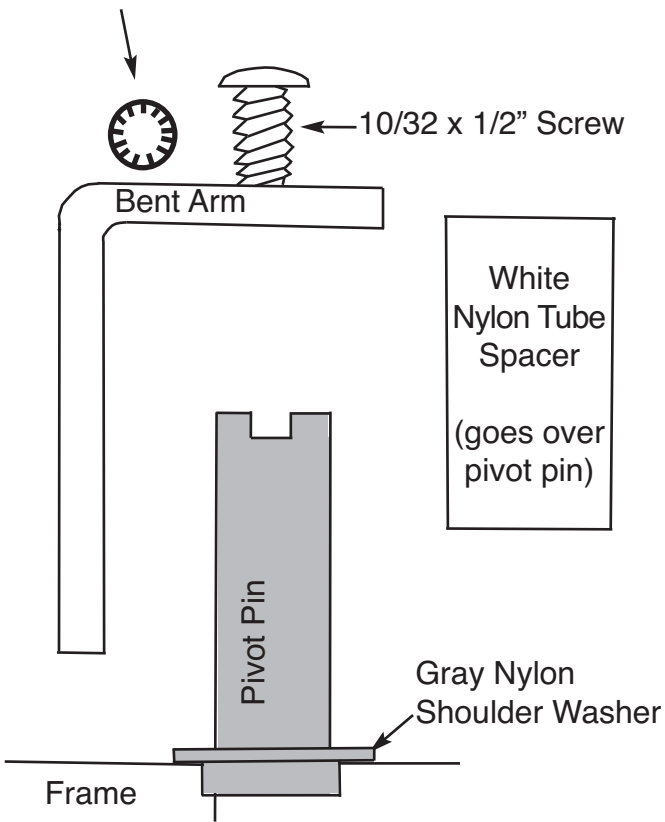
Suggested Tools Needed: Small wire grip pliers (dikes)
1/8" Allen Wrench

1. Remove interior frame from house door or wall by unscrewing the four retaining screws and sliding the pet door out of the mounting hole.
2. Remove the Spring Hoods by unscrewing hex head screw and lifting over rivet heads.
3. Remove the pivot screw that holds the bent arm in position using a 1/8 inch Allen wrench and remove the bent arm and spring.

Spring Hoods



Metal Internal Tooth Washer

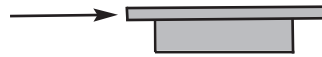


Plexidor® XLarge Springs Replacement Instructions (cont'd)

4. Push new pivot pin down into the frame with notched end on top.

5. Put gray nylon shoulder washer over pivot pin with wide part on top

6. Put nylon tube spacer over the pivot pin.



7. Put spring on top of nylon tube.

8. Then charge the spring as follows: Place the spring so that the tail of the spring that points up slightly is on the bottom. (As you face the door, the slightly bent spring tail will be in front of the vertical plate on the left spring side. On the right side of the door, the slightly bent spring tail will be behind the vertical plate.) Then using a pair of small wire gripping pliers (dikes), grab the top spring tail and wind it around and hook it over the vertical plate. Now the spring is charged.

9. Now snap the bent arm onto the pivot pin.

10. Place the internal tooth washer on top of the bent arm and slide screw down into the pivot pin.

11. Hold the pet door panel in the center of the frame and tighten the pivot pin screw. Do not overtighten, just make it snug.

12. Repeat process for the other side.

13. Trim the spring tail ends so that they extend approximately 1/16" beyond the vertical plate. Trimming may not be necessary.

14. Check that the spring tails do not touch any obstructions when door panels are fully opened in both directions.

15. Apply a coat of good quality grease to springs (we use marine grease), **do not use WD40.**

16. Replace the spring hoods. Do not over tighten the hood mount screws. Slide the pet door back into its mounting hole and you are done.